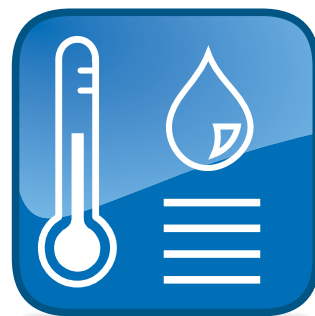


delta T

Gesellschaft für Medizintechnik mbH

Product OverView



Transport Systems for Life Science Products

Dear Customer,

Thank you for your interest in our products.

Whenever you need to transport a thermosensitive life science product we can offer you a suitable solution.

We have been developing, designing and producing our products since 2000 in our headquarter facility 60 North of Frankfurt , Germany in Fernwald. Among our customers are well known global players in the pharmaceutical industry and pharma resellers. Moreover; we have customers ranging from biotech companies, clinics and blood banks, but also research institutes and logistic companies. Our products are sold and used on all continents.

In this Product Overview you will find the technical details for all of our standard products, which will fulfill most transport requirements. When you have decided on the most suitable product combination for your needs, please contact us with your required dimensions, the storage temperature of your product and the required transport time.

As well as these standard products, we have already established many taylormade customer specific transport solutions.

On request we will forward you more information in greater detail.

We are looking forward to hearing from you soon.

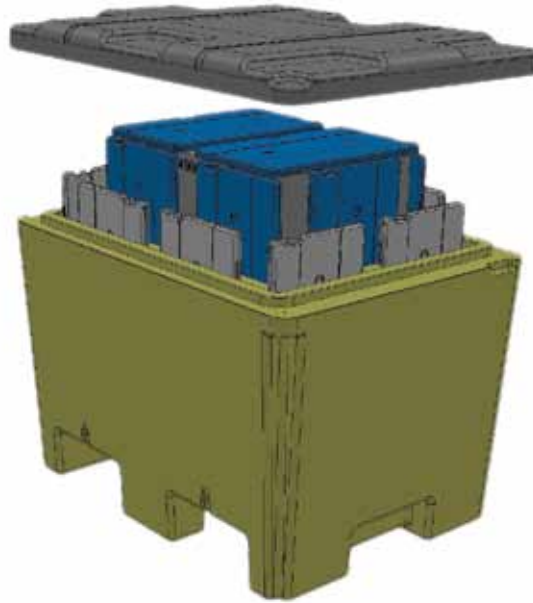
The sales team of delta T

Index

delta T Technology	07
TempShells	11
Ice Accus	14
Gel Accus	16
-30°C Freeze Elements	18
-21°C Freeze Elements	20
-18°C Freeze Elements	22
4°C Accus	24
22°C Accus	26
37°C Accus	28
Gelpacks	30
BlueLine-Travelbag	31
BlueLine Boxes	32
Silver Bags	35
Vaccum Boxes	36
Active Cool Boxes	37
Hard Cover Boxes	38
Aluminium Boxes	39
Styropor™ Boxes	40
EPS - Boxes	42
Pallet Shipper	44
Data Loggers	45

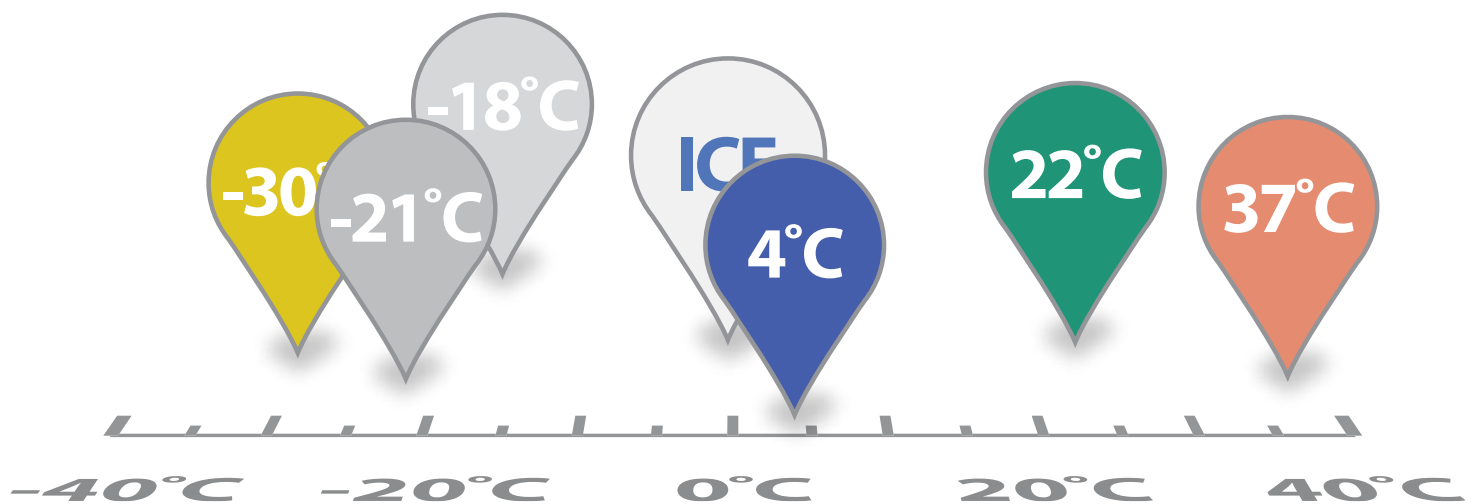
Structure of a transport system

A transport system that is optimized for the customer's purposes, consists of an insulation container and delta T fluid elements. The insulation should be light but sturdy and with low heat conductivity, whilst the fluid elements should surround the product in order to protect your valuable goods and stabilize the temperature.



What are delta T fluids?

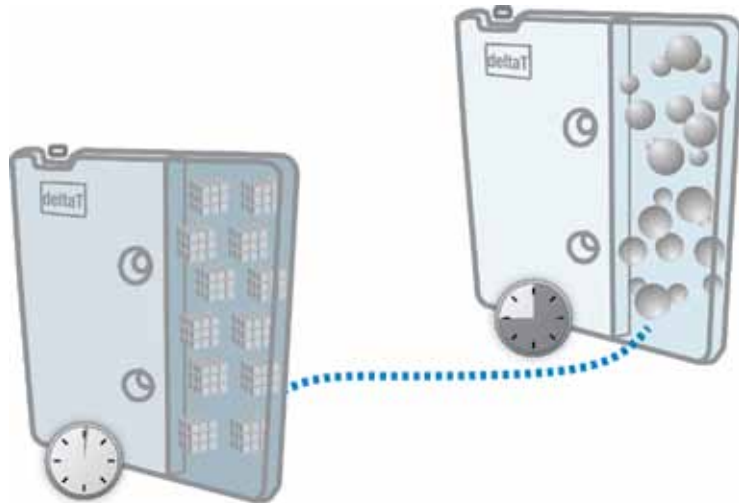
Due to the delta T fluid technology, different temperature ranges can be constantly achieved within an insulated container. The temperature range of the element is easily identifiable by the colour of the fluid it contains.



How do the delta T Fluids work?

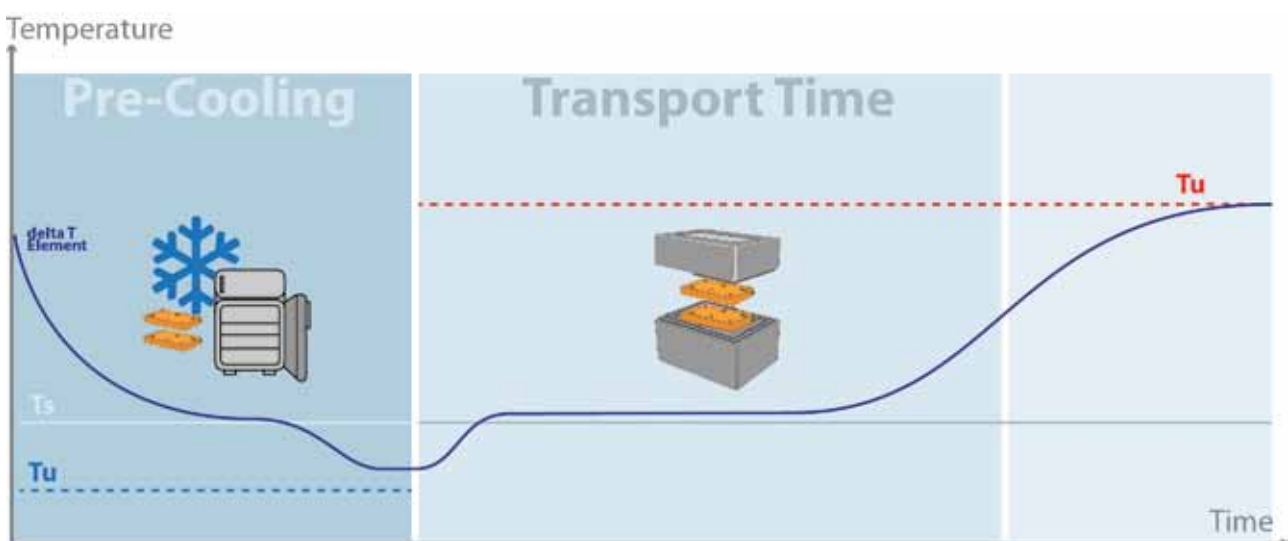
First, the elements must be pre-cooled for a certain period of time until the fluid is solid. This will occur when the temperature is at least 2°C under the fluid melting point. The pre-cooling time is dependant on the number of fluid elements present, and the overall performance of the elements heavily relies on the transport box/bag they are paired with. With small numbers of elements, overnight cooling should be sufficient. If you have any questions regarding the precooling process, please feel free to contact us.

Once the elements are solid they are placed into the insulated bag/box and are ready for transport. During thawing, which, for example occurs at -30°C for the orange elements. The temperature will remain constant until the entire element contents are liquefied.



How long will the temperature stay constant?

As long as is desired! We are able to configure a transport system with over 120 hours run time. The duration depends on the combination of the insulation packaging and fluid elements and by doubling the amount of eg. fluid elements, it will roughly double the time of transport. If we know your product dimensions, we can configure the correct system with the desired running time.



Tu Ambient Temperature Pre-cooling | **Tu** Ambient Temperature Transport | **Ts** Melting Temperature

What are TempShells?

The TempShells consist of two identical halves. When combined, the pair completely encases the thermo sensitive product.

TempShell (pair)



TempFrame (pair)

Through using Temp- Frames it is possible to expand the internal volume of the TempShells. As all system components are stackable, they offer perfect thermal protection.

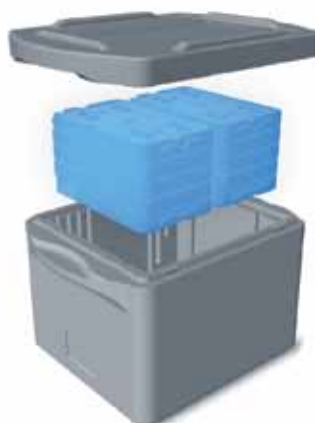


TempShells- Elements and Temp- Frames fit in all delta T insulated containers and bags.

Blueline 10L



Blueline 20L



Blueline 30L



4C TempShell – ElementOrder No. (pair): **A 1000 29 uk**

Consists of 2 halve shells

Dimensions:

Outer: 275 x 155 x 60 mm**Inner:** 210 x 110 x 30 mm**Colour:** PE natural**Fluid:** blue**Weight:** 2 x 0.54 = 1.08 kg

Sealing: laminated aluminium film and protective cap.

Liquid crystal thermometer 0°C ... 12°C

Shows the actual temperature of the element.

Will maintain a temperature between 2°C to 8°C

Protection against freezing

**4C TempShell – Frame**Order No. (pair): **A 1000 30 uk**

Dimensions:

Outer: 275 x 155 x 60 mm**Inner:** 210 x 110 x (2 x 30) mm**Colour:** PE natural**Fluid:** blue**Weight:** 2 x 0.34 = 0.68 kg

Sealing: laminated aluminium film and protective cap.

Will maintain a temperature between 2°C ... 8°C

**22C TempShell – Element**Order No. (pair): **A 1000 35 uk**

Dimensions:

Outer: 275 x 155 x 60 mm**Inner:** 210 x 110 x 30 mm**Colour:** PE natural**Fluid:** green**Weight:** 2 x 0.54 = 1.08 kg

Sealing: laminated aluminium film and protective cap.

Liquid crystal thermometer 10°C ... 40°C

Shows the actual temperature of the element.

Will maintain a temperature between 20°C ... 24°C

**22C TempShell – Frame**Order No. (pair): **A 1000 36 uk**

Dimensions:

Outer: 275 x 155 x 60 mm**Inner:** 210 x 110 x (2 x 30) mm**Colour:** PE natural**Fluid:** green**Weight:** 2 x 0.34 = 0.68 kg

Sealing: laminated aluminium film and protective cap.

Will maintain a temperature between 20°C ... 24°C



37C TempShell – Element

Order No. (pair): **A 1000 41 uk**

Dimensions:

Outer: 275 x 155 x 60 mm

Inner: 210 x 110 x 30 mm

Colour: PE natural

Fluid: red

Weight: 2 x 0.54 = 1.08 kg

Sealing: laminated aluminium film and protective cap.

Liquid crystal thermometer 10°C ... 40°C

Shows the actual temperature of the element.

Will maintain a temperature between 36°C ... 38°C



37C TempShell – Frame

Order No. (pair): **A 1000 42 uk**

Dimensions:

Outer: 275 x 155 x 60 mm

Inner: 210 x 110 x (2 x 30) mm

Colour: PE natural

Fluid: red

Weight: 2 x 0.34 = 0.68 kg

Sealing: laminated aluminium film and protective cap.

Will maintain a temperature between 36°C ... 38°C



-18C TempShell – Element

Order No. (pair): **A 1000 17 uk**

Dimensions:

Outer: 275 x 155 x 60 mm

Inner: 210 x 110 x 30 mm

Colour: PE natural

Fluid: transparent white

Weight: 2 x 0.75 = 1.5 kg

Sealing: laminated aluminium film and protective cap.

Will maintain a temperature between -22°C ... -18°C



-18C TempShell – Frame

Order No. (pair): **A 1000 18 uk**

Dimensions:

Outer: 275 x 155 x 60 mm

Inner: 210 x 110 x (2 x 30) mm

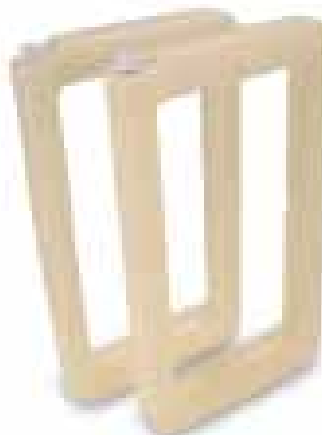
Colour: PE natural

Fluid: transparent white

Weight: 2 x 0.5 = 1.0 kg

Sealing: laminated aluminium film and protective cap.

Will maintain a temperature between -22°C ... -18°C



-21C TempShell – ElementOrder No. (pair): **A 1000 11 uk**

Dimensions:

Outer: 275 x 155 x 60 mm**Inner:** 210 x 110 x 30 mm**Colour:** PE natural**Fluid:** transparent white**Weight:** 2 x 0.72 = 1.44 kgSealing: laminated aluminium film and protective cap.
Will maintain a temperature between -23°C ... -19°C**-21C TempShell – Frame**Order No. (pair): **A 1000 12 uk**

Dimensions:

Outer: 275 x 155 x 60 mm**Inner:** 210 x 110 x (2 x 30) mm**Colour:** PE natural**Fluid:** transparent white**Weight:** 2 x 0.46 = 0.92 kgSealing: laminated aluminium film and protective cap.
Will maintain a temperature between -23°C ... -19°C**-30C TempShell – Element**Order No. (pair): **A 1000 05 uk**

Dimensions:

Outer: 275 x 155 x 60 mm**Inner:** 210 x 110 x 30 mm**Colour:** PE natural**Fluid:** orange**Weight:** 2 x 0.76 = 1.52 kgSealing: laminated aluminium film and protective cap.
Will maintain a temperature between -32°C ... -30°C**-30C TempShell – Frame**Order No. (pair): **A 1000 06 uk**

Dimensions:

Outer: 275 x 155 x 60 mm**Inner:** 210 x 110 x (2 x 30) mm**Colour:** PE natural**Fluid:** orange**Weight:** 2 x 0.48 = 0.96 kgSealing: laminated aluminium film and protective cap.
Will maintain a temperature between -32°C ... -30°C

ICE Accu S 170ml

Order No.: **A 0800 19 uk**

Size: 220 x 120 x 11 mm

Colour: blue

Fluid: transparent

Weight: 0.22 kg

Sealing: laminated aluminium film.

Packaging unit: 1 Tray contains 52 pieces, 1 pallet = 27

Trays = 1404 pieces



ICE Accu S 220ml

Order No.: **A 0800 20 uk**

Size: 270 x 130 x 11 mm

Colour: blue

Fluid: transparent

Weight: 0.34 kg

Sealing: laminated aluminium film.

Packaging unit: 1 Tray contains 56 pieces, 1 pallet = 16

Trays = 896 pieces



ICE Accu S 260ml

Order No.: **A 0800 21 uk**

Size: 280 x 155 x 11 mm

Colour: blue

Fluid: transparent

Weight: 0.38 kg

Sealing: laminated aluminium film.

Packaging unit: 1 Tray contains 54 pieces, 1 pallet = 16

Trays = 864 pieces



ICE Accu S 500ml

Order No.: **A 0800 22 uk**

Size: 320 x 245 x 11 mm

Colour: blue

Fluid: transparent

Weight: 0.8 kg

Sealing: laminated aluminium film.

Packaging unit: 1 Tray contains 24 pieces, 1 pallet = 20

Trays = 480 pieces



ICE Accu S 1L

Order No.: **A 0810 04 uk**

Size: 360 x 210 x 15 mm

Colour: blue

Fluid: transparent

Weight: 1.1 kg

Sealing: plastic plug.

Packaging unit: 1 Tray contains 12 pieces



ICE Accu 200mlOrder No.: **A 1000 19 uk****Size:** 165 x 88 x 21 mm**Colour:** PE natural**Fluid:** transparent blue**Weight:** 0.22 kg

Seamless and leak-proof.

Option of customer logo.

Packaging unit: 1 Tray contains 54 pieces, 1 pallet = 48 Trays = 2592 pieces

**ICE Accu 300ml**Order No.: **A 1000 23 uk****Size:** 210 x 90 x 20 mm**Colour:** PE natural**Fluid:** transparent blue**Weight:** 0.32 kg

Seamless and leak-proof.

Option of customer logo.

Packaging unit: 1 Tray contains 54 pieces, 1 pallet = 40 Trays = 2160 pieces

**ICE Accu 400ml**Order No.: **A 1000 20 uk****Size:** 170 x 85 x 35 mm**Colour:** PE natural**Fluid:** transparent blue**Weight:** 0.46 kg

Seamless and leak-proof.

Option of customer logo.

Packaging unit: 1 Tray contains 30 pieces, 1 pallet = 48 Trays = 1440 pieces

**ICE Accu 1L**Order No.: **A 1000 21 uk****Size:** 210 x 160 x 40 mm**Colour:** blue**Fluid:** transparent**Weight:** 1.1 kg

Sealing: plastic plug.

Packaging unit: 1 Tray contains 13 pieces, 1 pallet = 40 Trays = 520 pieces

**ICE Accu 2L**Order No.: **A 0900 04 uk****Size:** 319 x 275 x 35 mm**Colour:** PE natural**Fluid:** transparent blue**Weight:** 2.7 kg

Sealing: plastic plug.

Packaging unit: 1 Tray = 10 pieces

**ICE Accu 3L**Order No.: **A 1000 22 uk****Size:** 465 x 275 x 35 mm**Colour:** PE natural**Fluid:** transparent white**Weight:** 3.65 kg

Sealing: plastic plug.

Packaging unit: 1 Tray = 5 pieces



Gel Accu 200ml

Order No.: **A 0700 02 uk**

Size: 165 x 88 x 21 mm

Colour: PE natural

Fluid: Thermo Gel (blue)

Weight: 0.22 kg

Seamless and leak-proof.

Will maintain a temperature between -2°C ... +/-0°C

Packaging unit: 1 Tray contains 54 pieces, 1 pallet = 40 Trays = 2160 pieces



Gel Accu 300ml

Order No.: **A 0700 03 uk**

Size: 210 x 90 x 20 mm

Colour: PE natural

Fluid: Thermo Gel (blue)

Weight: 0.32 kg

Seamless and leak-proof.

Will maintain a temperature between -2°C ... +/-0°C

Packaging unit: 1 Tray contains 54 pieces, 1 pallet = 40 Trays = 2160 pieces



Gel Accu 400ml

Order No.: **A 0700 04 uk**

Size: 170 x 85 x 35 mm

Colour: PE natural

Fluid: Thermo Gel (blue)

Weight: 0.44 kg

Seamless and leak-proof.

Will maintain a temperature between -2°C ... +/-0°C

Packaging unit: 1 Tray contains 30 pieces, 1 pallet = 48 Trays = 1440 pieces



Gel Accu 600ml

Order No.: **A 0700 06 uk**

Size: 190 x 121 x 34 mm

Colour: PE natural

Fluid: Thermo Gel (blue)

Weight: 0.65 kg

Sealing: laminated aluminium film and protective cap.

Will maintain a temperature between -2°C ... +/- 0°C



Gel Accu 700ml

Order No.: **A 0700 07 uk**

Size: 210 x 135 x 30 mm

Colour: PE natural

Fluid: Thermo Gel (blue)

Weight: 0.75 kg

Sealing: laminated aluminium film and protective cap.

Will maintain a temperature between -2°C ... +/- 0°C



Gel Accu S 1000mlOrder No.: **A 0700 11 uk****Size:** 360 x 210 x 15 mm**Colour:** PE natural**Fluid:** Thermo Gel (blue)**Weight:** 1.1 kgSealing: laminated aluminium film and protective cap.
Will maintain a temperature between -2°C ... +/- 0°C**Gel Accu 1L**Order No.: **A 0700 10 uk****Size:** 210 x 160 x 40 mm**Colour:** PE natural**Fluid:** Thermo Gel (blue)**Weight:** 1.1 kgSealing: laminated aluminium film and protective cap.
Will maintain a temperature between -2°C ... +/- 0°C**Gel Accu 2L**Order No.: **A 0700 20 uk****Size:** 319 x 275 x 35 mm**Colour:** PE natural**Fluid:** Thermo Gel (blue)**Weight:** 3.00 kgSealing: laminated aluminium film and protective cap.
Will maintain a temperature between -2°C ... +/- 0°C**Gel Accu 3L**Order No.: **A 0700 30 uk****Size:** 465 x 275 x 35 mm**Colour:** PE natural**Fluid:** Thermo Gel (blue)**Weight:** 3.80 kgSealing: laminated aluminium film and protective cap.
Will maintain a temperature between -2°C ... +/- 0°C

-30°C Freeze Elements

-30C Freeze Element S 170ml

Order No.: A 0800 01 uk

Size: 220 x 120 x 11 mm

Colour: PE natural

Fluid: Orange

Weight: 0.3 kg

Sealing: laminated aluminium film and protective cap.
Will maintain a temperature between -32°C ... -30°C



-30C Freeze Element S 220ml

Order No.: A 0800 02 uk

Size: 270 x 130 x 11 mm

Colour: PE natural

Fluid: Orange

Weight: 0.35 kg

Sealing: laminated aluminium film and protective cap.
Will maintain a temperature between -32°C ... -30°C



-30C Freeze Element S 260ml

Order No.: A 0800 03 uk

Size: 280 x 155 x 11 mm

Colour: PE natural

Fluid: Orange

Weight: 0.4 kg

Sealing: laminated aluminium film and protective cap.
Will maintain a temperature between -32°C ... -30°C



-30C Freeze Element S 500ml

Order No.: A 0800 04 uk

Size: 320 x 245 x 11 mm

Colour: PE natural

Fluid: Orange

Weight: 0.8 kg

Sealing: laminated aluminium film and protective cap.
Will maintain a temperature between -32°C ... -30°C



-30C Freeze Element S 1000ml

Order No.: A 0810 08 uk

Size: 360 x 210 x 18 mm

Colour: PE natural

Fluid: Orange

Weight: 1.4 kg

Sealing: laminated aluminium film and protective cap.
Will maintain a temperature between -32°C ... -30°C



-30C Freeze Element 200ml

Order No.: A 1000 01 uk

Size: 165 x 88 x 21 mm

Colour: PE natural

Fluid: Orange

Weight: 0.3 kg

Sealing: laminated aluminium film and protective cap.
Will maintain a temperature between -32°C ... -30°C



-30C Freeze Element 300ml

Order No.: **A 0820 08 uk**

Size: 210 x 88 x 21 mm

Colour: PE natural

Fluid: Orange

Weight: 0.4 kg

Sealing: laminated aluminium film and protective cap.

Will maintain a temperature between -32°C ... -30°C



-30C Freeze Element 400ml

Order No.: **A 0900 15 uk**

Size: 170 x 85 x 35 mm

Colour: PE natural

Fluid: Orange

Weight: 0.55 kg

Cap-free design.

Will maintain a temperature between -32°C ... -30°C



-30C Freeze Element 600ml

Order No.: **A 0900 08 uk**

Size: 190 x 121 x 34 mm

Colour: PE natural

Fluid: Orange

Weight: 0.82 kg

Sealing: laminated aluminium film and protective cap.

Will maintain a temperature between -32°C ... -30°C



-30C Freeze Element 700ml

Order No.: **A 0850 08 uk**

Size: 210 x 135 x 30 mm

Colour: PE natural

Fluid: Orange

Weight: 0.95 kg

Sealing: laminated aluminium film and protective cap.

Will maintain a temperature between -32°C ... -30°C



-30C Freeze Element 1L

Order No.: **A 1000 03 uk**

Size: 210 x 160 x 40 mm

Colour: PE natural

Fluid: Orange

Weight: 1.5 kg

Sealing: laminated aluminium film and protective cap.

Will maintain a temperature between -32°C ... -30°C



-30C Freeze Element 2L

Order No.: **A 0900 01 uk**

Size: 319x 275 x 35 mm

Colour: PE natural

Fluid: Orange

Weight: 3.55 kg

Sealing: laminated aluminium film and protective cap.

Will maintain a temperature between -32°C ... -30°C



-30C Freeze Element 3L

Order No.: **A 1000 04 uk**

Size: 465 x 275 x 35 mm

Colour: PE natural

Fluid: Orange

Weight: 4.4 kg

Sealing: laminated aluminium film and protective cap.

Will maintain a temperature between -32°C ... -30°C



-21°C Freeze Elements

-21C Freeze Element S 170ml

Order No.: **A 0800 07 uk**

Size: 220 x 120 x 11 mm

Colour: PE natural

Fluid: transparent white

Weight: 0.3 kg

Sealing: laminated aluminium film and protective cap.

Will maintain a temperature between -23°C ... -19°C



-21C Freeze Element S 220ml

Order No.: **A 0800 08 uk**

Size: 270 x 130 x 11 mm

Colour: PE natural

Fluid: transparent white

Weight: 0.35 kg

Sealing: laminated aluminium film and protective cap.

Will maintain a temperature between -23°C ... -19°C



-21C Freeze Element S 260ml

Order No.: **A 0800 09 uk**

Size: 280 x 155 x 11 mm

Colour: PE natural

Fluid: transparent white

Weight: 0.4 kg

Sealing: laminated aluminium film and protective cap.

Will maintain a temperature between -23°C ... -19°C



-21C Freeze Element S 500ml

Order No.: **A 0800 10 uk**

Size: 320 x 245 x 11 mm

Colour: PE natural

Fluid: transparent white

Weight: 0.8 kg

Sealing: laminated aluminium film and protective cap.

Will maintain a temperature between -23°C ... -19°C



-21C Freeze Element S 1000ml

Order No.: **A 0810 07 uk**

Size: 360 x 210 x 18 mm

Colour: PE natural

Fluid: transparent white

Weight: 1.3 kg

Sealing: laminated aluminium film and protective cap.

Will maintain a temperature between -23°C ... -19°C



-21C Freeze Element 200ml

Order No.: **A 1000 07 uk**

Size: 165 x 88 x 21 mm

Colour: PE natural

Fluid: transparent white

Weight: 0.25 kg

Sealing: laminated aluminium film and protective cap.

Will maintain a temperature between -23°C ... -19°C



-21C Freeze Element 300ml

Order No.: **A 0820 07 uk**

Size: 210 x 88 x 21 mm

Colour: PE natural

Fluid: transparent white

Weight: 0.4 kg

Sealing: laminated aluminium film and protective cap.

Will maintain a temperature between -23°C ... -19°C



-21C Freeze Element 400ml

Order No.: **A 1000 08 uk**

Size: 170 x 85 x 35 mm

Colour: PE natural

Fluid: transparent white

Weight: 0.5kg

Cap-free design.

Will maintain a temperature between -23°C ... -19°C



-21 C Freeze Element 600ml

Order No.: **A 0900 09 uk**

Size: 190 x 121 x 34 mm

Colour: PE natural

Fluid: transparent white

Weight: 0.82 kg

Sealing: laminated aluminium film and protective cap.

Will maintain a temperature between -23°C...-19°C



-21 C Freeze Element 700ml

Order No.: **A 0850 07 uk**

Size: 210 x 135 x 30 mm

Colour: PE natural

Fluid: transparent white

Weight: 0.9 kg

Sealing: laminated aluminium film and protective cap.

Will maintain a temperature between -23°C...-19°C



-21C Freeze Element 1L

Order No.: **A 1000 09 uk**

Size: 210 x 160 x 40 mm

Colour: PE natural

Fluid: transparent white

Weight: 1.45 kg

Sealing: laminated aluminium film and protective cap.

Will maintain a temperature between -23°C ... -19°C



-21C Freeze Element 2L

Order No.: **A 0900 02 uk**

Size: 319x 275 x 35 mm

Colour: PE natural

Fluid: transparent white

Weight: 3.4 kg

Sealing: laminated aluminium film and protective cap.

Will maintain a temperature between -23°C ... -19°C



-21C Freeze Element 3L

Order No.: **A 1000 10 uk**

Size: 465 x 275 x 35 mm

Colour: PE natural

Fluid: transparent white

Weight: 4.3 kg

Sealing: laminated aluminium film and protective cap.

Will maintain a temperature between -23°C ... -19°C



-18°C Freeze Elements

-18 C Freeze Element S 170ml

Order No.: **A 0800 13 uk**

Size: 220 x 120 x 11 mm

Colour: PE natural

Fluid: transparent white

Weight: 0.3 kg

Sealing: laminated aluminium film and protective cap.

Will maintain a temperature between -20°C ... -18°C



-18 C Freeze Element S 220ml

Order No.: **A 0800 14 uk**

Size: 270 x 130 x 11 mm

Colour: PE natural

Fluid: transparent white

Weight: 0.35 kg

Sealing: laminated aluminium film and protective cap.

Will maintain a temperature between -20°C ... -18°C



-18 C Freeze Element S 260ml

Order No.: **A 0800 15 uk**

Size: 280 x 155 x 11 mm

Colour: PE natural

Fluid: transparent white

Weight: 0.4 kg

Sealing: laminated aluminium film and protective cap.

Will maintain a temperature between -20°C ... -18°C



-18 C Freeze Element S 500ml

Order No.: **A 0800 16 uk**

Size: 320 x 245 x 11 mm

Colour: PE natural

Fluid: transparent white

Weight: 0.8 kg

Sealing: laminated aluminium film and protective cap.

Will maintain a temperature between -20°C ... -18°C



-18 C Freeze Element S 1000ml

Order No.: **A 0810 06 uk**

Size: 360 x 210 x 18 mm

Colour: PE natural

Fluid: transparent white

Weight: 1.4 kg

Sealing: laminated aluminium film and protective cap.

Will maintain a temperature between -20°C ... -18°C



-18 C Freeze Element 200ml

Order No.: **A 1000 13 uk**

Size: 165 x 88 x 21 mm

Colour: PE natural

Fluid: transparent white

Weight: 0.23 kg

Sealing: laminated aluminium film and protective cap.

Will maintain a temperature between -20°C ... -18°C



-18 C Freeze Element 300ml

Order No.: **A 0820 06 uk**

Size: 210 x 88 x 21 mm

Colour: PE natural

Fluid: transparent white

Weight: 0.4 kg

Sealing: laminated aluminium film and protective cap.

Will maintain a temperature between -20°C ... -18°C



-18 C Freeze Element 400ml

Order No.: **A 1000 14 uk**

Size: 170 x 85 x 35 mm

Colour: PE natural

Fluid: transparent white

Weight: 0.44 kg

Cap-free design.

Will maintain a temperature between -20°C ... -18°C



-18 C Freeze Element 600ml

Order No.: **A 0900 10 uk**

Size: 190 x 121 x 34 mm

Colour: PE natural

Fluid: transparent white

Weight: 0.84 kg

Sealing: laminated aluminium film and protective cap.

Will maintain a temperature between -20°C...-18°C



-18 C Freeze Element 700ml

Order No.: **A 0850 06 uk**

Size: 210 x 135 x 30 mm

Colour: PE natural

Fluid: transparent white

Weight: 0.95 kg

Sealing: laminated aluminium film and protective cap.

Will maintain a temperature between -20°C...-18°C



-18 C Freeze Element 1L

Order No.: **A 1000 15 uk**

Size: 210 x 160 x 40 mm

Colour: PE natural

Fluid: transparent white

Weight: 1.4 kg

Sealing: laminated aluminium film and protective cap.

Will maintain a temperature between -20°C ... -18°C



-18 C Freeze Element 2L

Order No.: **A 0900 03 uk**

Size: 319 x 275 x 35 mm

Colour: PE natural

Fluid: transparent white

Weight: 3.4 kg

Sealing: laminated aluminium film and protective cap.

Will maintain a temperature between -20°C ... -18°C



-18 C Freeze Element 3L

Order No.: **A 1000 16 uk**

Size: 465 x 275 x 35 mm

Colour: PE natural

Fluid: transparent white

Weight: 4.3 kg

Sealing: laminated aluminium film and protective cap.

Will maintain a temperature between -20°C ... -18°C



4°C Accu

4 C Accu S 170ml

Order No.: **A 0800 31 uk**

Size: 220 x 120 x 11 mm

Colour: PE natural

Fluid: blue

Weight: 0.2 kg

Sealing: laminated aluminium film and protective cap.
Will maintain a temperature between 2°C ... 8°C



4 C Accu S 220ml

Order No.: **A 0800 32 uk**

Size: 270 x 130 x 11 mm

Colour: PE natural

Fluid: blue

Weight: 0.25 kg

Sealing: laminated aluminium film and protective cap.
Will maintain a temperature between 2°C ... 8°C



4 C Accu S 260ml

Order No.: **A 0800 33 uk**

Size: 280 x 155 x 11 mm

Colour: PE natural

Fluid: blue

Weight: 0.3 kg

Sealing: laminated aluminium film and protective cap.
Will maintain a temperature between 2°C ... 8°C



4 C Accu S 500ml

Order No.: **A 0800 34 uk**

Size: 320 x 245 x 11 mm

Colour: PE natural

Fluid: blue

Weight: 0.6 kg

Sealing: laminated aluminium film and protective cap.
Will maintain a temperature between 2°C ... 8°C



4 C Accu S 1000ml

Order No.: **A 0900 23 uk**

Size: 360 x 210 x 18 mm

Colour: PE natural

Fluid: blue

Weight: 0.98 kg

Sealing: laminated aluminium film and protective cap.
Will maintain a temperature between 2°C ... 8°C



4 C Accu 200ml

Order No.: **A 1000 25 uk**

Size: 165 x 88 x 21 mm

Colour: PE natural

Fluid: blue

Weight: 0.2 kg

Sealing: laminated aluminium film and protective cap.
Will maintain a temperature between 2°C ... 8°C



4 C Accu 300ml

Order No.: **A 0820 03 uk**

Size: 210 x 88 x 21 mm

Colour: PE natural

Fluid: blue

Weight: 0.3 kg

Sealing: laminated aluminium film and protective cap.
Will maintain a temperature between 2°C ... 8°C



4 C Accu 400mlOrder No.: **A 0830 03 uk****Size:** 170 x 90 x 35 mm**Colour:** PE natural**Fluid:** transparent blue**Weight:** 0.35 kg

Sealing: laminated aluminium film and protective cap.

Will maintain a temperature between 2°C ... 8°C

**4 C Accu 600ml**Order No.: **A 0900 11 uk****Size:** 190 x 121 x 34 mm**Colour:** PE natural**Fluid:** transparent blue**Weight:** 0.5 kg

Sealing: laminated aluminium film and protective cap.

Will maintain a temperature between 2°C ... 8°C

**4 C Accu 700ml**Order No.: **A 0850 03 uk****Size:** 210 x 135 x 30 mm**Colour:** PE natural**Fluid:** transparent blue**Weight:** 0.6 kg

Sealing: laminated aluminium film and protective cap.

Will maintain a temperature between 2°C ... 8°C

**4 C Accu 1L**Order No.: **A 1000 27 uk****Size:** 210 x 160 x 40 mm**Colour:** PE natural**Fluid:** transparent blue**Weight:** 1.05 kg

Sealing: laminated aluminium film and protective cap.

Will maintain a temperature between 2°C ... 8°C

**4 C Accu 2L**Order No.: **A 0900 05 uk****Size:** 319 x 275 x 35 mm**Colour:** PE natural**Fluid:** transparent blue**Weight:** 2.4 kg

Sealing: laminated aluminium film and protective cap.

Will maintain a temperature between 2°C ... 8°C

**4 C Accu 3L**Order No.: **A 1000 28 uk****Size:** 465 x 275 x 35 mm**Colour:** PE natural**Fluid:** transparent blue**Weight:** 3.1 kg

Sealing: laminated aluminium film and protective cap.

Will maintain a temperature between 2°C ... 8°C



22°C Accu

22 C Accu S 170ml

Order No.: **A 0800 31 uk**

Size: 220 x 120 x 11 mm

Colour: PE natural

Fluid: green

Weight: 0.2 kg

Sealing: laminated aluminium film and protective cap.

Will maintain a temperature between 20°C ... 24°C



22 C Accu S 220ml

Order No.: **A 0800 32 uk**

Size: 270 x 130 x 11 mm

Colour: PE natural

Fluid: green

Weight: 0.25 kg

Sealing: laminated aluminium film and protective cap.

Will maintain a temperature between 20°C ... 24°C



22 C Accu S 260ml

Order No.: **A 0800 33 uk**

Size: 280 x 155 x 11 mm

Colour: PE natural

Fluid: green

Weight: 0.3 kg

Sealing: laminated aluminium film and protective cap.

Will maintain a temperature between 20°C ... 24°C



22 C Accu S 500ml

Order No.: **A 0800 34 uk**

Size: 320 x 245 x 11 mm

Colour: PE natural

Fluid: green

Weight: 0.6 kg

Sealing: laminated aluminium film and protective cap.

Will maintain a temperature between 20°C ... 24°C



22 C Accu S 1000ml

Order No.: **A 0810 02 uk**

Size: 360 x 210 x 18 mm

Colour: PE natural

Fluid: green

Weight: 0.9 kg

Sealing: laminated aluminium film and protective cap.

Will maintain a temperature between 20°C ... 24°C



22 C Accu 200ml

Order No.: **A 1000 31 uk**

Size: 165 x 88 x 21 mm

Colour: PE natural

Fluid: green

Weight: 0.2 kg

Sealing: laminated aluminium film and protective cap.

Will maintain a temperature between 20°C ... 24°C



22 C Accu 300ml

Order No.: **A 0820 02 uk**

Size: 210 x 88 x 21 mm

Colour: PE natural

Fluid: green

Weight: 0.25 kg

Sealing: laminated aluminium film and protective cap.

Will maintain a temperature between 20°C ... 24°C



22 C Accu 400mlOrder No.: **A 0830 02 uk****Size:** 170 x 90 x 35 mm**Colour:** PE natural**Fluid:** green**Weight:** 0.3 kgSealing: laminated aluminium film and protective cap.
Will maintain a temperature between 20°C ... 24°C**22 C Accu 600ml**Order No.: **A 0900 12 uk****Size:** 190 x 121 x 34 mm**Colour:** PE natural**Fluid:** green**Weight:** 0.54 kgSealing: laminated aluminium film and protective cap.
Will maintain a temperature between 20°C ... 24°C**22 C Accu 700ml**Order No.: **A 0850 02 uk****Size:** 210 x 135 x 30 mm**Colour:** PE natural**Fluid:** green**Weight:** 0.6 kgSealing: laminated aluminium film and protective cap.
Will maintain a temperature between 20°C ... 24°C**22 C Accu 1L**Order No.: **A 1000 33 uk****Size:** 210 x 160 x 40 mm**Colour:** PE natural**Fluid:** green**Weight:** 1.0 kgSealing: laminated aluminium film and protective cap.
Will maintain a temperature between 20°C ... 24°C**22 C Accu 2L**Order No.: **A 0900 06 uk****Size:** 319 x 275 x 35 mm**Colour:** PE natural**Fluid:** green**Weight:** 2.55 kgSealing: laminated aluminium film and protective cap.
Will maintain a temperature between 20°C ... 24°C**22 C Accu 3L**Order No.: **A 1000 34 uk****Size:** 465 x 275 x 35 mm**Colour:** PE natural**Fluid:** green**Weight:** 3.1 kgSealing: laminated aluminium film and protective cap.
Will maintain a temperature between 20°C ... 24°C

37°C Accu

37 C Accu S 170ml

Order No.: **A 0800 37 uk**

Size: 220 x 120 x 11 mm

Colour: PE natural

Fluid: red

Weight: 0.2 kg

Sealing: laminated aluminium film and protective cap.

Will maintain a temperature between 36°C ... 38°C



37 C Accu S 220ml

Order No.: **A 0800 38 uk**

Size: 270 x 130 x 11 mm

Colour: PE natural

Fluid: red

Weight: 0.25 kg

Sealing: laminated aluminium film and protective cap.

Will maintain a temperature between 36°C ... 38°C



37 C Accu S 260ml

Order No.: **A 0800 39 uk**

Size: 280 x 155 x 11 mm

Colour: PE natural

Fluid: red

Weight: 0.3 kg

Sealing: laminated aluminium film and protective cap.

Will maintain a temperature between 36°C ... 38°C



37 C Accu S 500ml

Order No.: **A 0800 40 uk**

Size: 320 x 245 x 11 mm

Colour: PE natural

Fluid: red

Weight: 0.6 kg

Sealing: laminated aluminium film and protective cap.

Will maintain a temperature between 36°C ... 38°C



37 C Accu S 1000ml

Order No.: **A 0810 01 uk**

Size: 360 x 210 x 18 mm

Colour: PE natural

Fluid: red

Weight: 0.95 kg

Sealing: laminated aluminium film and protective cap.

Will maintain a temperature between 36°C ... 38°C



37 C Accu 200ml

Order No.: **A 1000 37 uk**

Size: 165 x 88 x 21 mm

Colour: PE natural

Fluid: red

Weight: 0.2 kg

Sealing: laminated aluminium film and protective cap.

Will maintain a temperature between 36°C ... 38°C



37 C Accu 300ml

Order No.: **A 0820 01 uk**

Size: 210 x 88 x 21 mm

Colour: PE natural

Fluid: red

Weight: 0.25 kg

Sealing: laminated aluminium film and protective cap.

Will maintain a temperature between 36°C ... 38°C



37 C Accu 400mlOrder No.: **A 0900 21 uk****Size:** 170 x 90 x 35 mm**Colour:** PE natural**Fluid:** red**Weight:** 0.35 kgSealing: laminated aluminium film and protective cap.
Will maintain a temperature between 36°C ... 38°C**37 C Accu 600ml**Order No.: **A 0900 13 uk****Size:** 190 x 121 x 34 mm**Colour:** PE natural**Fluid:** red**Weight:** 0.52 kgSealing: laminated aluminium film and protective cap.
Will maintain a temperature between 36°C ... 38°C**37 C Accu 700ml**Order No.: **A 0850 01 uk****Size:** 210 x 135 x 30 mm**Colour:** PE natural**Fluid:** red**Weight:** 0.6 kgSealing: laminated aluminium film and protective cap.
Will maintain a temperature between 36°C ... 38°C**37 C Accu 1L**Order No.: **A 1000 39 uk****Size:** 210 x 160 x 40 mm**Colour:** PE natural**Fluid:** red**Weight:** 0.95 kgSealing: laminated aluminium film and protective cap.
Will maintain a temperature between 36°C ... 38°C**37 C Accu 2L**Order No.: **A 0900 07 uk****Size:** 319 x 275 x 35 mm**Colour:** PE natural**Fluid:** red**Weight:** 2.4 kgSealing: laminated aluminium film and protective cap.
Will maintain a temperature between 36°C ... 38°C**37 C Accu 3L**Order No.: **A 1000 40 uk****Size:** 465 x 275 x 35 mm**Colour:** PE natural**Fluid:** red**Weight:** 3.25 kgSealing: laminated aluminium film and protective cap.
Will maintain a temperature between 36°C ... 38°C

GelPack 100

Order No.: **A 1000 43 uk**

Size: 105 x 105 x 10 mm

Filling: Gel. Transparent. Colourless

Weight: 0.1 kg

Soft ice pack with high cooling effect.
Remains flexible at a temperature as low as -10°C
External material is food-safe and leak-proof.
Quantity per cardboard box: 48 pieces.



GelPack 200

Order No.: **A 1000 44 uk**

Size: 185 x 120 x 10 mm

Filling: Gel. Blue. Transparent

Weight: 0.2 kg

Soft ice pack with high cooling effect.
Remains flexible at a temperature as low as -10°C
External material is food-safe and leak-proof.
Quantity per cardboard box: 24 pieces.



GelPack 600

Order No.: **A 1000 46 uk**

Size: 240 x 180 x 20 mm

Filling: Gel. Blue. Transparent

Weight: 0.6 kg

Soft ice pack with high cooling effect.
Remains flexible at a temperature as low as -10°C
External material is food-safe and leak-proof.
Quantity per cardboard box: 12 pieces.



GelPack 800

Order No.: **A 1000 47 uk**

Size: 300 x 220 x 20 mm

Filling: Gel. Blue. Transparent

Weight: 0.8 kg

Soft ice pack with high cooling effect.
Remains flexible at a temperature as low as -10°C
External material is food-safe and leak-proof.
Quantity per cardboard box: 8 pieces.



BlueLine Every day case

Order No.: **B 1000 35 uk**

Size: 200 x 110 x 45 mm

Colour: blue

Weight: 0.15 kg

For the transport of drugs, pens, lancets, lancing device and glucometer in everyday life. Compact with removable liner for pens to match the BlueLine Travelbag.



BlueLine Travelbag Accu Set

Order No.: **B 1000 55 uk**

Size: 270 x 160 x 110 mm

Colour: blue

Weight: 1.8 kg

Consists of a pair of 4°C cooling elements and two 200 ml Ice Accus.

For the transport of drugs at 2 to 8°C and use in the BlueLine Travelbag



BlueLine Travelbag

Order No.: **B 1000 36 uk**

Dimensions:

Outer: 270 x 160 x 110 mm

Inner (Useable Volume): 190 x 100 x 32 mm

Colour: blue

Weight: 2.05 kg

Includes 4°C cooling elements, Ice Accus and gelpacks. For the private transport of drugs from 2 to 8°C. Also available in -30°C, -21°C, -18°C, 22°C and 37°C temperatures.



BlueLine Travelbag (complete)

Order No.: **B 1000 37 uk**

Dimensions:

Outer: 270 x 160 x 150 mm

Inner (Useable Volume): 190 x 100 x 32 mm

Colour: blue

Weight: 2.2 kg

Including 4°C Cooling Elements, Ice Accus and Every Day Case (Best. Nr.: B 1000 35 uk) For the private transport of drugs at 2 to 8°C



TransPorter Blue Line 5 L

Order No.: **B 1000 23 uk**

Dimensions:

Outer: 464 x 257 x 230 mm

Inner: 290 x 170 x 130 mm

Colour: blue

Volume: 5L

Weight: 0.9 kg

Robust. ergonomic handles. stackable.
Dishwasher safe. sealable
1L cooling elements positionable in 4 possible
Positions. Optional inclusion of RFID-chips for
temperature monitoring and box identification.
Suitable for 1L temperature storage elements and
TempShell system.
Accessories: B 100062 uk



TransPorter Blue Line 10 L

Order No.: **B 1000 34 uk**

Dimensions:

Outer: 464 x 257 x 350 mm

Inner: 290 x 170 x 250 mm

Colour: blue

Volume: 10L

Weight: 1.24 kg

Robust. Ergonomic handles. Stackable.
Dishwasher safe. sealable.
1L cooling elements positionable in 4
positions. Optional inclusion of RFID-chips for
temperature monitoring and box identification.
Suitable for 1L temperature storage elements and
TempShell system.
Accessories:
UN3373 P650 kit B 090010 uk
Carton B 100061 uk



TransPorter Blue Line 20L

Order No.: **B 1000 33 uk**

Dimensions:

Outer: 488 x 368 x 340 mm

Inner: 321 x 285 x 230 mm

Colour: blue

Volume: 21L

Weight: 1.48 kg

Robust. Ergonomic handles. Stackable.
Dishwasher safe. Sealable.
2L cooling elements positionable in 4
positions. Optional inclusion of RFID-chips for
temperature monitoring and box identification.
Suitable for 2L temperature storage elements and
TempShell system.
Accessories
Shoulder strap B 100092 uk
Carton B 100060 uk



TransPorter BlueLine 30L

Order No.: **B 1000 20 uk**

Dimensions:

Outer: 646 x 368 x 340 mm

Inner: 470 x 285 x 230 mm

Colour: blue

Volume: 31L

Weight: 2.06 kg

Robust. Ergonomic handles. Stackable.
Dishwasher safe. Sealable.
3L cooling elements positionable in 4 positions. Optional inclusion of RFID-chips for temperature monitoring and box identification. Suitable for 3L temperature storage elements and TempShell system.

Accessories

Shoulder strap B 100093 uk

Carton B 100056 uk



TransPorter BlueLine 50 L

Order No.: **B 1000 50 uk**

Dimensions:

Outer: 646 x 368 x 500 mm

Inner: 470 x 285 x 395 mm

Colour: blue

Volume: 50L

Weight: 3.00 kg

Robust. Ergonomic handles. Stackable.
Dishwasher safe. Sealable.
3L cooling elements positionable in 4 positions. Optional inclusion of RFID-chips for temperature monitoring and box identification. Suitable for 3L temperature storage elements and TempShell system.

Accessories:

Carton B 100059 uk



Seal for Transport-Box

Order No.: **B 1000 29 uk**

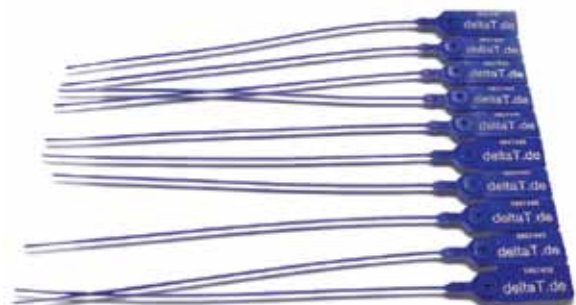
Length of sealing strip: 255 mm

Overall length: 342 mm. Druckfeld 43x21 mm

Material: Strong Plastic

Weight: 2 g

Consecutive numbering. Suitable for TransPorter BlueLine Series and Silverbags.
Packaging unit: 100 pieces.



Shoulder Strap

- B 1000 91 uk (for 10L Box)
- B 1000 92 uk (for 20L Box)
- B 1000 93 uk (for 30L Box)

Strap with shoulder pad for comfort
Colour: black
Only available for 10 to 30L



Cardboard Packaging

- B 1000 62 uk (for 5L Box)
- B 1000 61 uk (for 10L Box)
- B 1000 60 uk (for 20L Box)
- B 1000 56 uk (for 30L Box)
- B 1000 59 uk (for 50L Box)

Protection for shipping by parcel post.
In neutral, double wall design.



Customer Label

B 1000 44 uk

Your own logo on the Transport Box
Lid: 297 x 105 mm
Bottom: 85 x 55 mm
The same for all sizes.



Lock System

B 1000 65 uk

The same for all sizes.



Document Window

B 1000 43 uk

For documents of size 297 x 210 mm
Not available for 5L



P650 kit

- B 0900 60 uk (for 5L Box)
- B 0900 10 uk (for 10L Box)
- B 0900 20 uk (for 20L Box)
- B 0900 30 uk (for 30L Box)
- B 0900 50 uk (for 50L Box)

Contains all necessary items.
Products according to P650 ADR or
PI650 and IATA-DGR or ICAO-TI Standards
To transport in the BlueLine Boxes.



Silverbag 3L

Order No.: **B 1000 03 uk**

Dimensions: 240 x 120 x 170 mm

Colour: silver/black

Volume: 3L

Weight: 0.24 kg

Suitable for 200ml cooling elements with document pocket.



Silverbag 10L

Order No.: **B 1000 04 uk**

Dimensions: 310 x 180 x 260 mm

Colour: silver/black

Volume: 10L

Weight: 0.52 kg

Suitable for 4 pairs of TempShell elements or 1 pair of elements

And 3 pairs of TempShell frames.

Document pocket. Sealable.



Silverbag 16L

Order No.: **B 1000 05 uk**

Dimensions: 380 x 200 x 330 mm

Colour: silver/black

Volume: 16L

Weight: 1.30 kg

Suitable for 5 pairs of TempShell elements or combinations of elements and TempShell frame.

Document compartment and shoulder strap. Sealable.



Silverbag 30L

Order No.: **B 1000 06 uk**

Dimensions: 410 x 240 x 350 mm

Colour: silver/black

Volume: 30L

Weight: 1.56 kg

Suitable for 10 pairs of TempShell elements or Combinations of elements and TempShell frame with plastic part.

Document compartment and shoulder strap. Sealable.



Vacuum Boxes

ThermoBox 160L

Order No.: **B 1000 16 uk**

Dimensions:

Outer: 800 x 600 x 750 mm

Inner: 680 x 470 x 480 mm

Footprint: half a Euro-Palette

Colour: blue or black

Volume: about 160L

Weight: 45 kg

Robust transport containers with sealable lock and 20mm vacuum insulation.



MiniVacuumBox 16L

Order No.: **B 1000 07 uk**

Dimensions: 410 x 240 x 350 mm

Colour: silver/black

Volume: 16L

Weight: 4.04 kg

Suitable for 5 double elements or double elements with TempShell frames.
Sealable with double zipper. Plastic interior.
Strap. Document bag. Equipped with vacuum insulation.



MiniVacuumCase

Order No.: **B 1000 39 uk**

Dimensions:

Outer: 422 x 250 x 415 mm

Inner: 335 x 165 x 305 mm

Colour: blue

Volume: 16L

Weight: 7.04 kg

Suitable for 5 pairs of TempShell elements and/or frames.
Robust plastic case with vacuum insulation.
Locks with "butterfly" closures. Shoulder strap.
Carrying handle on lid. Sealable. Washable plastic interior.



Courier Case

Order No.: **B 1000 40 uk**

Dimensions:

Outer: 415 x 245 x 320 mm

Inner: 325 x 160 x 215 mm

Colour: blue or black

Volume: 11L

Weight: 5.98 kg

Suitable for 3.5 pairs of TempShell elements and/or frames.
Robust plastic case with vacuum insulation. Locks with "butterfly" closures.
Shoulder strap. Carrying handle on lid. Sealable. Washable plastic interior.
Customized solutions possible - Volume: from 10L to 1000L



Comp25

Order No.: **C 1000 07 uk**

Dimensions:

Outer: 380 x 340 x 580 mm

Inner: 260 x 270 x 320 mm + 120 x 270 x 120 mm

Volume: 25L

Colour: dark gray / light gray

High-performance compressor coolbox.
 Temperature control adjustable in 1°C increments.
 Temperature range of -18°C ... +10°C
 Power supply: DC 12~24V and AC 230V
 Via external power supply.
 Robust design, interior made seamlessly. PU foam insulation.
 Interior lighting. Built-in battery protection. Energy saving mode or quick cooling function selectable.
 Digital temperature display.
 Including external power supply 100-240V.



Comp35

Order No.: **C 1000 12 uk**

Dimensions:

Outer: 550 x 350 x 375 mm

Inner: 340 x 270 x 320 mm + 125 x 270 x 145 mm

Volume: 35L

Colour: dark gray / light gray

High-performance compressor cooling.
 Temperature control adjustable in 1°C increments.
 Temperature range of -18°C ... +10°C
 Power supply: DC 12~24V and AC 100-240V
 Robust design. Interior made seamlessly. PU foam insulation.
 Interior lighting. Built-in battery protection.
 Power saving mode or quick cooling function selectable.
 Digital temperature display.



Comp45

Order No.: **C 1000 13 uk**

Dimensions:

Outer: 550 x 350 x 450 mm

Inner: 340 x 270 x 390 mm + 125 x 270 x 145 mm

Volume: 45L

Colour: dark gray / light gray

Powerful compressor cool box.
 Temperature control adjustable in 1°C increments.
 Temperature range of -18°C ... +10°C
 Power supply: DC 12~24V and AC 100-240V
 Robust design. Interior made seamlessly. PU foam insulation.
 Interior lighting. Built-in battery protection.
 Power saving mode or quick cooling function selectable.
 Digital temperature display.



BigBox Active

Order No.: **C 1000 01 uk**

Dimensions:

Outer: 460 x 385 x 590 mm

Inner: 340 x 280 x 480 mm

Volume: 45L

Colour: gray / white

Weight: 7.4 kg

Active cooled transport container. 50mm PU insulation foam.
 Power supply: 12 VDC. 50W
 Temperature (programmable): 2 to 8°C



Hard Cover Boxes

TVB6 complete

Order No.: **B 1000 52 uk**

Dimensions:

Outer: 444 x 264 x 214 mm

Inner: 371 x 175 x 165 mm

Volume: 6L Colour: yellow / white

Weight: 1.2 kg

Hard transport case. Outer container on request.

Insulation: PU foam.

Suitable for all Akku S 1000ml



BigBox passive

Order No.: **B 1000 17 uk**

Dimensions:

Outer: 460 x 385 x 590 mm

Inner: 340 x 280 x 480 mm

Volume: 45L

Colour: gray / white

Weight: 6.12 kg

Hard transport case.

Insulation: 50 mm PU foam. Suitable for 3L Elements



BigBox 70L passive

Order No.: **B 1000 70 uk**

Dimensions:

Outer: 720 x 420 x 410 mm

Inner: 600 x 335 x 335 mm

Volume: 70L

Colour: blue / white

Weight: 7.5 kg

Insulation: 35 mm PU foam



BigBox 100L passive

Order No.: **B 1001 00 uk**

Dimensions:

Outer: 870 x 470 x 500 mm

Inner: 800 x 410 x 405 mm

Volume: 100L

Colour: blue / white

Weight: 13.5 kg

Insulation: 35 mm PU foam



BigBox 150L passive

Order No.: **B 1001 50 uk**

Dimensions:

Outer: 1020 x 470 x 490 mm

Inner: 990 x 410 x 390 mm

Volume: 150L

Colour: blue / white

Weight: 15.4 kg

Insulation: 35 mm PU foam



AluCase 23L

Order No.: **B 1000 14 uk**

Dimensions:

Outer: 580 x 395 x 275 mm

Inner: 470 x 285 x 165 mm

Weight: 5.54 kg

Sturdy aluminium box with polypropylene inner lining as well as 30 to 35 mm insulation. Two side handles and one on the top of the box. All handles with plastic coating. Two sealable snap closures. Stackable corners. Rubber seal between the box and lid. Cover fixed with textile belts. All add-on parts are fixed by rivets. Closing the lid and bottom stops dust. Four handles and a document compartment on the lid.



BioHazardLogisticBox

Order No.: **B 1000 18 uk**

Dimensions of aluminium containers:

Outer: 385 x 285 x 343 mm

Dimensions of Neopor insulation insert:

Outer: 305 x 215 x 305 mm

Inner: 240 x 150 x 200 mm

Weight: 3.68 kg

Stable aluminium box with insulation jacket. Plastic covered handle on the lid. Sealable closure. Stackable. Threaded design meets the requirements according to ADR, RID, IMDG Code, UN, ICAO TI and IATA for dangerous goods. Accessories: Sliding lock bag 600 x 600 mm. Liquid containment suction system 535 x 375 mm



We also offer the complete system consisting of insulated box and cooling elements including validation!

MonoBox

Order No.: **B 1000 08 uk**

Dimensions: 390 x 290 x 230 mm

Colour: gray

Weight: 0.64 kg

Material: Neopor

Insulation: 60-80 mm

Neopor packaging for 1 pair of TempShell elements.
Consisting of two equal halves.



MonoTripleBox

Order No.: **B 1000 09 uk**

Dimensions: 390 x 290 x 290 mm

Colour: gray

Weight: 0.74 kg

Material: Neopor

Insulation: 60-80 mm

Neopor packaging for 2 pairs of TempShell of elements or frames.
Consisting of half MonoBox and half TripleBox



TripleBox

Order No.: **B 1000 10 uk**

Dimensions: 390 x 290 x 350 mm

Colour: gray

Weight: 0.84 kg

Material: Neopor

Insulation: 60-80 mm

Neopor packaging for 3 pairs TempShell elements or frames.
Consisting of two equal halves.



Bag for MonoTriple Boxes

Order No.: B 1100 09 uk

Dimensions: 400 x 300 x 300 mm

Colour: silver/black

Volume: 35L

Weight: 2.0 kg

Robust carrying case for Mono/Triple boxes with document pocket and shoulder strap. Sealable.



Outer boxes for MonoTriple Boxes

Order No.: B 1000 11 uk

Dimensions: 400 x 300 x 230-350 mm

Protects the MonoTriple Box with repeated useage.

Material: sturdy cardboard

A shipping unit contains 20 pieces.



Styrofoam packaging

(No order number)

Size: Various sizes

Volume: From 2L to 200L

Material: EPS

Customer specific solutions.



EPS Line 5L

Order No.: **B 1000 90 uk**

Dimensions:

Outer: 464x257x230 mm

Inner: 290x170x130 mm

Colour: white

Volume: 5 L

Weight: 0.4 kg

Ergonomic handles. Stackable. Sealable.
Possible to position 1L cooling elements in 4 positions
above the transported goods.
Suitable for 1L elements, TempShell system and IceAkkus.



EPS Line 10 L

Order No.: **B 1000 95 uk**

Dimensions:

Outer: 464 x 257 x 350 mm

Inner: 290 x 170 x 250 mm

Colour: white

Volume: 10 L

Weight: 0.5 kg

Ergonomic handles. Stackable. Sealable.
Possible to position 1L elements in 4 positions
above the transported goods.
Suitable for 1L elements, TempShell system and IceAkkus.



EPS Line 20 L

Order No.: **B 1000 96 uk**

Dimensions:

Outer: 488 x 368 x 340 mm

Inner: 321 x 285 x 230 mm

Colour: white

Volume: 21 L

Weight: 0.8 kg

Ergonomic handles. Stackable. Sealable.
Possible to position 2L cooling elements in 4 positions
above the transported goods.
Suitable for 2L elements, TempShell system and IceAkkus.



EPS Line 30 L

Order No.: **B 1000 97 uk**

Dimensions:

Outer: 646 x 368 x 340 mm

Inner: 470 x 285 x 230 mm

Colour: white

Volume: 31 L

Weight: 1.0 kg

Ergonomic handles. Stackable. Sealable.

Possible to position 3L cooling elements in 4 positions above the transported goods.

Suitable for 3L elements, TempShell system and IceAkkus.



EPS Line 50 L

Order No.: **B 1000 98 uk**

Dimensions:

Outer: 646 x 368 x 500 mm

Inner: 470 x 285 x 395 mm

Colour: white

Volume: 50 L

Weight: 1.8 kg

Ergonomic handles. Stackable. Sealable.

Possible to position 3L cooling elements in 4 positions above the transported goods.

Suitable for 3L elements, TempShell system and IceAkkus.



EPS Line 50L long range

Order No.: **B 1000 98 uk**

Dimensions:

Outer: 646 x 368 x 500 mm

Inner: 470 x 285 x 395 mm

Colour: white

Volume: 50 L

Weight: 4.5 kg

Ergonomic handles. Stackable. Sealable.
Positioning slots for ICE Accu S 0.9 and
4 C Accu S 1L
Transport time up to 120 hours possible.



US-Shipper PUR 770L

Order No.: **B 1000 32 uk**

Dimensions:

Outer: 1155 x 985 x 1100 mm

Inner: 995 x 825 x 940 mm

Colour: white

Volume: 770 L

Weight: 26.6 kg

Transport box with 80mm PU insulation.
Suitable for U.S. pallet base (not supplied)
Reuseable. Divisible into six separate parts.
Optimized for air freight applications.
Wipe-clean plastic surface.



US-Shipper PUR 1050L

Order No.: **B 1000 30 uk**

Dimensions:

Outer: 1150 x 970 x 1440 mm

Inner: 995 x 825 x 1275 mm

Colour: white

Volume: 1050 L

Weight: 32 kg

Transport box with 80mm PU insulation.
Suitable for U.S. pallet base (not supplied)
Reuseable. Divisible into six separate parts.
Optimized for air freight applications.
Wipe-clean plastic surface.



myThermoScan.net Basic

Order No.: D 1000 25 uk

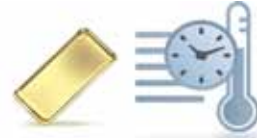
License for up to 5 ThermoScan data loggers or ThermoScan HR data loggers with a permanent establishment.
Single license for the web portal for myThermoScan.net
One user and up to 5 ThermoScan data loggers.



myThermoScan.net Gold

Order No.: D 1000 26 uk

License for ThermoScan data loggers or ThermoScan HR data loggers with a permanent establishment.
License for the web portal for myThermoScan.net
5 users and up to 20 ThermoScan data loggers.



myThermoScan.net Platin

Order No.: D 1000 27 uk

License for ThermoScan data loggers or ThermoScan HR data loggers with a permanent establishment.
License for the web portal for myThermoScan.net
20 users and up to 100 ThermoScan data loggers.



ThermoScan DataLogger

Order No.: D 1000 01 uk

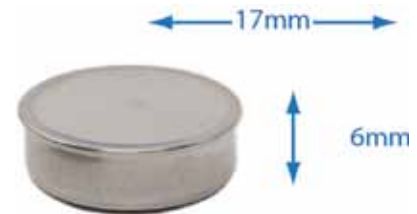
Temperature data logger.

Range: -40 ... 85°C

Resolution: 0.5°C

Weight: 3 g

Dimensions: Diameter 17mm. Height 6mm. Sturdy metal casing.



ThermoScan DataLogger (Calibrated)

Order No.: D 1000 02 uk

Temperature data logger.

Range: -40 ... +85°C

Resolution: 0.5°C

Weight: 3 g

Dimensions: Diameter 17mm. Height 6mm. Sturdy metal casing.

Incl. Calibration (-30 °C ... +40 °C)



ThermoScan HR DataLogger

Order No.: D 1000 03 uk

Temperature data logger.

Range: -40 ... +85°C

Resolution: 0.1°C

Weight: 3 g

Dimensions: Diameter 17mm. Height 6mm. Sturdy metal casing.



ThermoScan HR DataLogger (Calibrated)

Order No.: D 1000 04 uk

Temperature data logger.

Range: -40 ... +85°C

Resolution: 0.1°C

Weight: 3 g

Dimensions: Diameter 17mm. Height 6mm. Sturdy metal casing.

Incl. Calibration (-30°C ... +40°C)



ThermoScan USB Adapter

Order No.: D 1000 06 uk

USB port for connecting the BlueDot reading unit to the PC.

Weight: 9.5 g



ThermoScan BlueDot Read Unit

Order No.: D 1000 07 uk

ThermoScan datalogger reader for connection through USB adapter.

Nr. D 1000 05 uk or Nr. D 1000 06 uk

Weight: 54 g



ThermoScan Software

Order No.: D 1000 08 uk

Software for programming and evaluating the ThermoScan software in Microsoft™ Excel™ License for 5 ThermoScan data loggers or ThermoScan HR data loggers.

Weight: 15.5 g



ThermoScan Software update

Order No.: D 1000 08 uk

Software for programming and evaluating the ThermoScan software in Microsoft™ Excel™ License for 5 ThermoScan data loggers or ThermoScan HR data loggers.

Weight: 15.5 g



ThermoScan Starter Kit (USB)

Order No.: **D 1000 10 uk**

Accessory kit for ThermoScan Datalogger
 - Port-Adapter for ThermoScan-Datenlogger.
 USB port connection
 - BlueDot reading unit
 - ThermoScan software

License for 5 ThermoScan data loggers or
 ThermoScan HR data loggers.
 Software for programming and evaluating ThermoScan
 Data loggers in Microsoft™ Excel™

Weight: 0.32 kg



TempRec

Order No.: **D 1000 11 uk**

Dimensions: 65 x 31 x 106 mm

Material: Polycarbonate. Waterproof gem. IP 68

Weight: 0.12 kg

To read ThermoScan data loggers.
 Stores data from up to 370 ThermoScan data loggers.
 Display of alarms via LEDs and an LCD display.
 Not suitable for starting or resetting ThermoScan data loggers.
 Import data into the DeltaT ThermoScan scanning application.



USB Adapter TempRec

Order No.: **D 1000 13 uk**

USB Adapter for the TempRec Reader

Cable length: 1 m

Weight: 0.10 kg



ThermoScan company software

Order No.: **D 1000 12 uk**

For all ThermoScan data loggers or ThermoScan HR data
 loggers including site license for a permanent establishment.
 Software for programming and evaluation of ThermoScan
 data loggers in Microsoft™ Excel™



delta T

Gesellschaft für Medizintechnik mbH

delta T GmbH | Industriestr. 13 | 35463 Fernwald | Germany
Fon: +49 (0)641-3305554-0 | Fax: +49 (0)641-3305554-9
www.deltaT.de | www.pharma-logistic.com | email: sales@deltaT.de
© 2012 deltaT - Germany | Designed by: www.asilavi.com